

SIM5320A-EVB kit USER Guide_V1.0

1 SIM5320A EVB



- A: Power on/off keypad
- B: GPS antenna SMA
- C: MAIN antenna SMA
- D: RPI connector (including TXD RXD ON/OFF DTR DCD PWREN SUPPLY RST pins)
- E: LED indicator (including NET STA POWER)
- F: MICRO USB Adapter connector
- H: AUDIO connector
- I: USB connector
- K: TEST PINS

2 SIM5320A accessories

- A: MAIN BOARD
- B: RF antenna
- C: GPS antenna

3 Accessory Interface

3.1 POWER Interface



3.2 ANTENNA INTERFACE

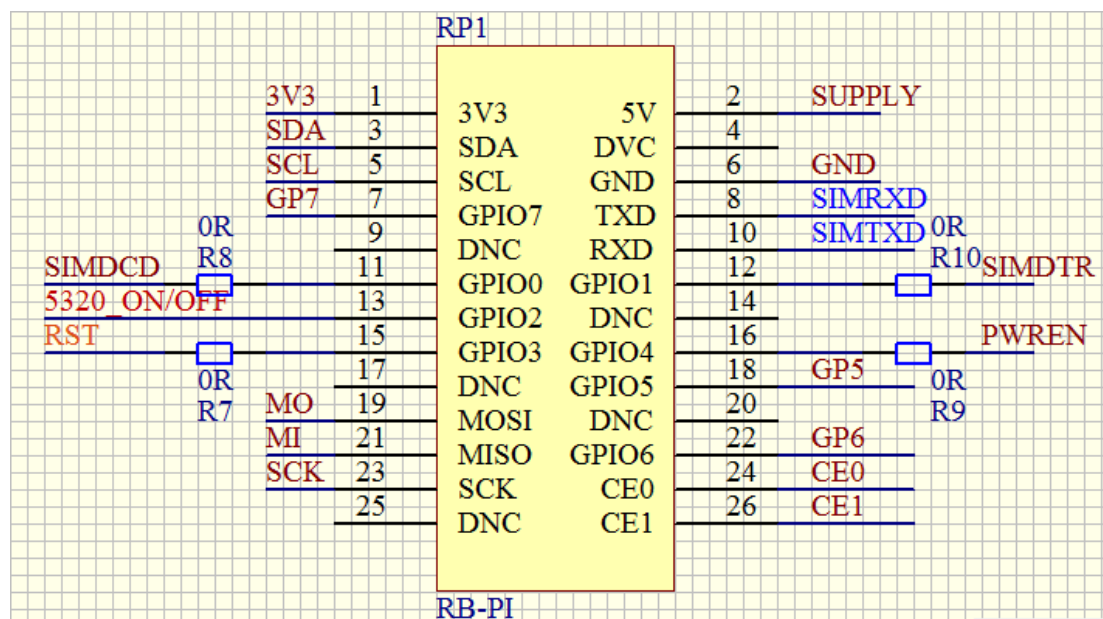


MAIN antenna connector



GPS antenna connector

3.3 UART AND OTHER INTERFACE



Note: R7/R8/R9 and R10 were no welded in this EVB board.

User can power on or off this EVB through pull up or down the PWREN pin.

User can power on or off the SIM5320A module through 5320_ON/OFF pin.

SIM5320 also have a RST pin to rest the module. This function is used as an emergency reset only when AT command "AT+CPOF" and POWER_ON pin has no effect. User can pull the RST pin to ground, then the module will reset.

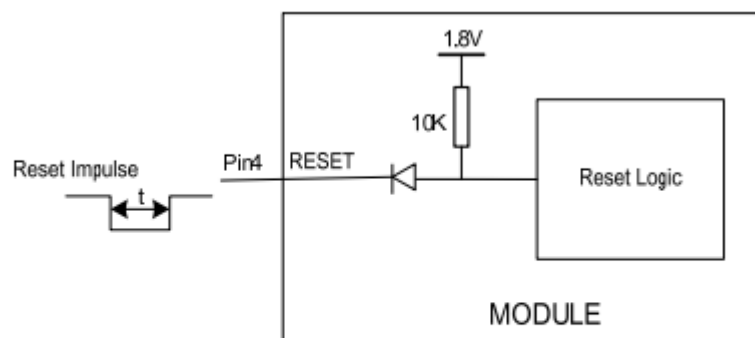


Figure 40: Reset circuit

Note: $50ms < t < 200ms$. ESD components are suggested to be used on Reset pin.

In the sleep mode, user can set the SIMDTR pin to let the SIM532 module to enter or exit the sleep mode. More information, please refer the SIM5320_Hardware_Design document.

3.4 Operating Status LED



Net work LED

LED Status	Module Status
Always On	Searching Network/Call Connect
200ms ON, 200ms OFF	Data Transmit
800ms ON, 800ms OFF	Registered network
Off	Power off / Sleep

PWR	Module power indicator
STA	Module is running

3.5 USB Interface



User can use a MICRO USB cable connect this EVB to PC.

4 Quickly start

4.1 Running

When user use the power supply, use should connect USB DC adapter(5V 2A) to the USB adapter connector; then insert a valued SIMCARD and check if the antenna is connected; finally, press the on/off switch for about 1 second, and then SIM5320A module will begin running.

User can see the STA LED on the EVB is on. By the state, user can judge whether the EVB is running or not. No function and test can be executed if user has not connected necessary accessories.

4.2 Installing Driver

In the first case, user need install the module USB driver, which can be got from our sales;

4.3 send a AT command

Power on the system, type the AT command from the HyperTerminal, and then the sim5320A module will execute its corresponding function. For example, if user type "AT", then it should respond "OK"; if user type "ATI", it should display product identification information.

4.4. Turning off

Press the power on/off button for about 1 second, SIM5320A module will be turned off.